

In the production of printed circuit boards, the continual trend goes to miniaturisation. Constant close gaps between the tracks and higher packing densities raise very high demands to the brushes.

To accomplish the demands of your customers, you need progressive and innovative tools. Due to a constant improvement and development, our tools are always up to date.

Our brushes are produced on a very high quality standard getting very good results and a very high service life. This is guaranteed by well-trained staff, use of high-grade raw material and continuous quality controls.

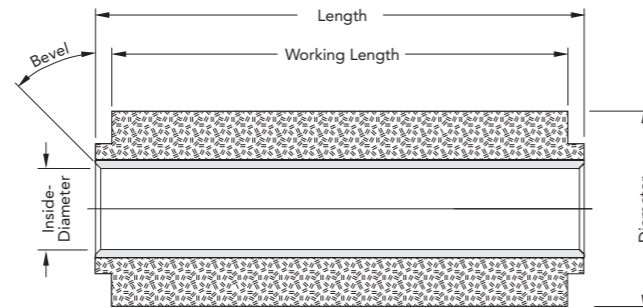
By developing new brushes, we work closely together with the leading machine manufacturers, since a lot of demands can only be accomplished if the tools and machine fit into one another.

Innovative and high-grade products are the solution for customer specifically demands. A constant development of new tools or the improvement of standard tools guarantee us an important share of the market.

By continually exchanging experience between sales department, development department and production we can react very quickly on new trends of the market.

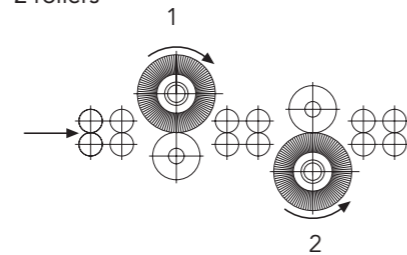
Your demands are our standard.

Important measurements

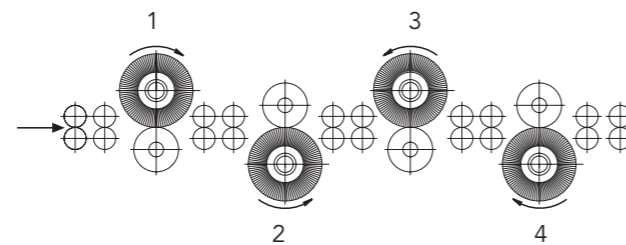


Diagrammatic description of brushing machines

2 rollers



4 rollers



P.S.E. Werkzeuge & Maschinen GmbH
für mechanische Oberflächenbearbeitung

Unidekstraße 1
75015 Bretten-Gölshausen

Telefon +49 (0) 72 52/ 50 49-3
Telefax +49 (0) 72 52/ 50 49-49

info@pse-werkzeuge.de
www.pse-werkzeuge.de



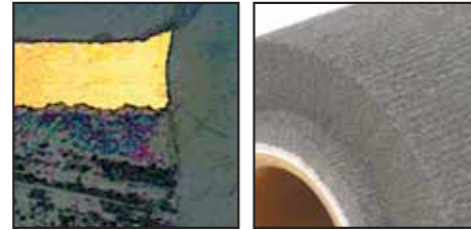
PSE –
Partner of the
PCB-Industry



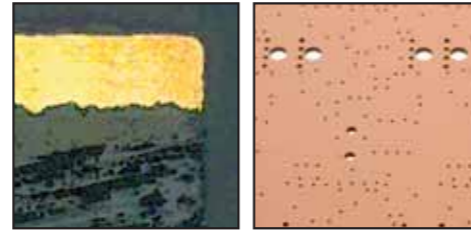
Deburring



Non-Woven-Flap-Roller SVL Type ①
Very high efficiency of deburring while having optimal drill hole edges. According to your request, solid or rounded drill hole edges.



Non-Woven-Roller SVG Type ②
(convoluted and foamed)
For drill hole edges more than 70 µm only



Mechanical cleaning prior to photo resist/screen printing

Non-Woven-Flap-Roller SVL Type ①
Matt, less-reflective surface and a very good resist-adhesion is given by high micro-roughness (no under-etchings of the resist).

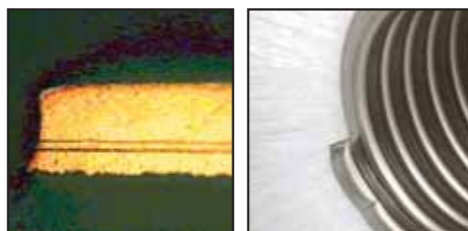


Nylon-Roller ③
When using pumice machines for mechanical cleaning, we recommend loose nylon-spiral-rollers or punched nylon-rollers. The advantage is a non-direction orientated surface.



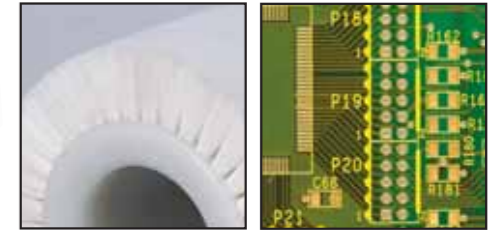
Mechanical cleaning prior to solder mask

Non-Woven-Flap-Roller SVL Type ①
A very good and equal rounding of the etched tracks. A regular surface structure by very high micro-roughness giving a very good adhesion of the solder mask.



Nylon-Roller ③
When using pumice machines for mechanical cleaning, we recommend loose nylon-spiral-rollers or punched nylon-rollers. The advantage is a non-direction orientated surface.

Finishing



Non-Woven-Flap-Rollers SVL Type ① or Nylon-Rollers ③

- For customer specifically applications
- Cleaning on Hot Air Leveling
- Processing of "gold-fingers"
- Defluxing
- Freeing from dust
- etc.

Cleaning of Pressplates

Non-Woven-Flap-Roller SVL Type ①
A very good cleaning effect and equal roughness during the entire operation term.



Holder/Cup-Brushes



Punched cup brushes on plastic cores, available in all saleable measurements and brush materials.



Advantages

Your advantages when using P.S.E. tools:

- An exact true running during the entire operation term.
- No unbalances, therefore good care of the machine bearings
- No non-woven residues in the holes and between the tracks
- An equal roughness during the entire durability
- A very long service life by special impregnations

= very high efficiency

Experienced engineers select the appropriate tool for you from a variety of potential materials, densities and impregnations.

- ① Available in all saleable materials, densities and impregnations
- ② Available in all saleable materials and hardness.
- ③ Available as punched roller or as spiral roller (loose or mounted on a water resistant tube)